

## Uniq

*“the unique one”*

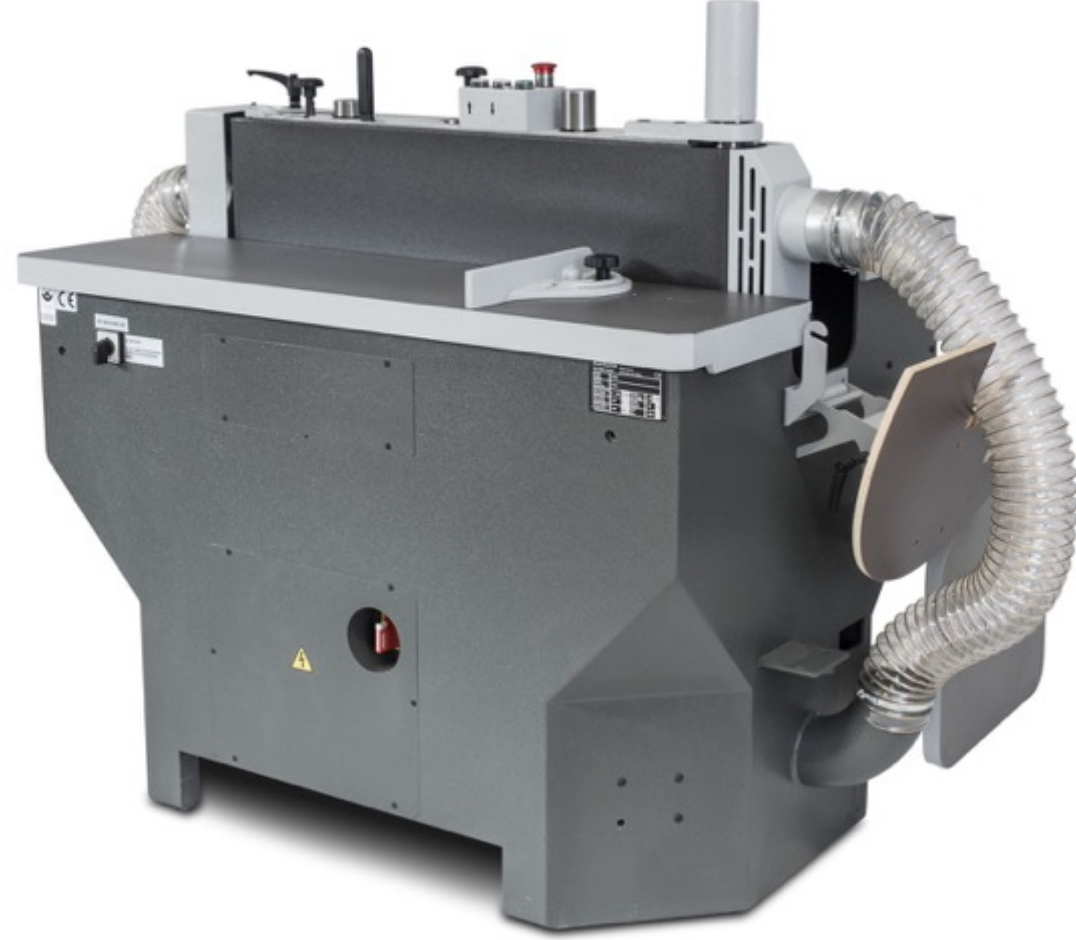


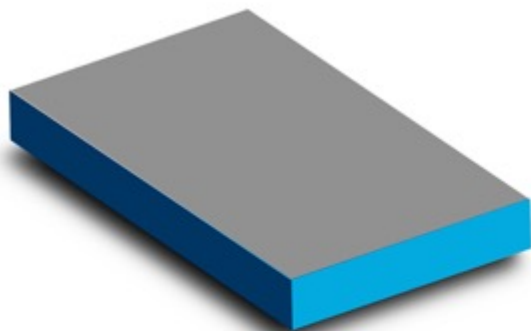
*Sanding Ideas – Ideas that get the Job done!*



## ADVANTAGES:

- ✓ 4 independent sanding stations
- ✓ Pivoting of main sanding unit up to 45° (patented)
- ✓ No table height adjustment necessary when pivoting the sanding unit
- ✓ The entire sanding unit oscillates with a stroke of up to **90mm / 3.5"**
- ✓ Sanding unit oscillation is precisely programmable
- ✓ Full utilisation of abrasive belt and graphite pad
- ✓ Precisely adjustable stock removal
- ✓ Highest possible sanding precision
- ✓ Heavy cast iron construction
- ✓ Most reliable edge-sander on the market
- ✓ Most versatile edge-sander on the market
- ✓ Easy and intuitive operation
- ✓ 36 months warranty
- ✓ ...

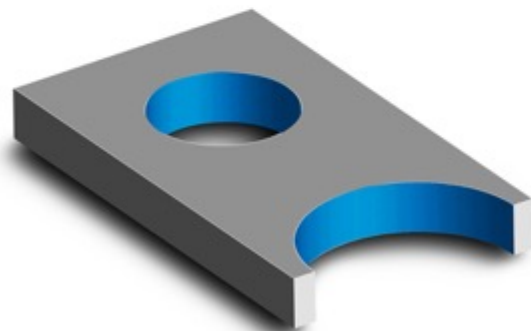




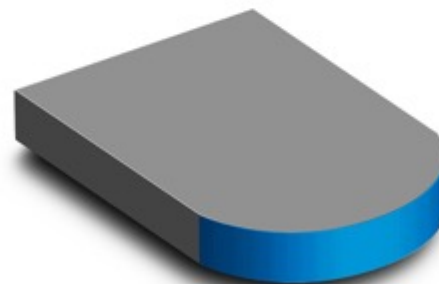
calibration and finishing  
of **solid work pieces**



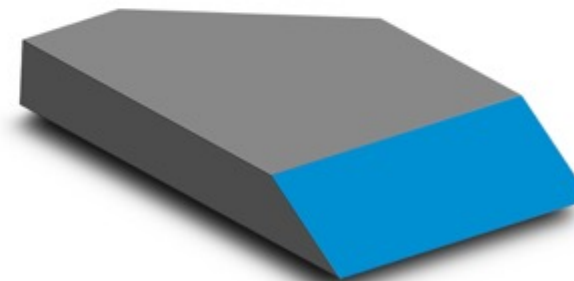
calibration and finishing  
of **veneered work pieces**



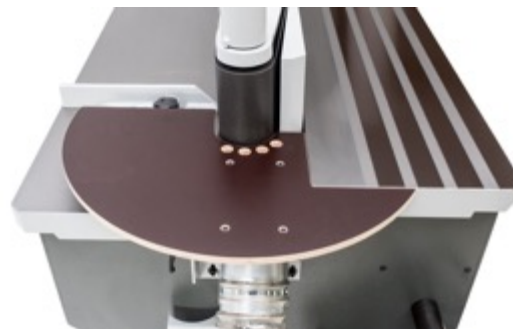
sanding of **inner curves**



sanding of **outer curves**



sanding of **angular edges**





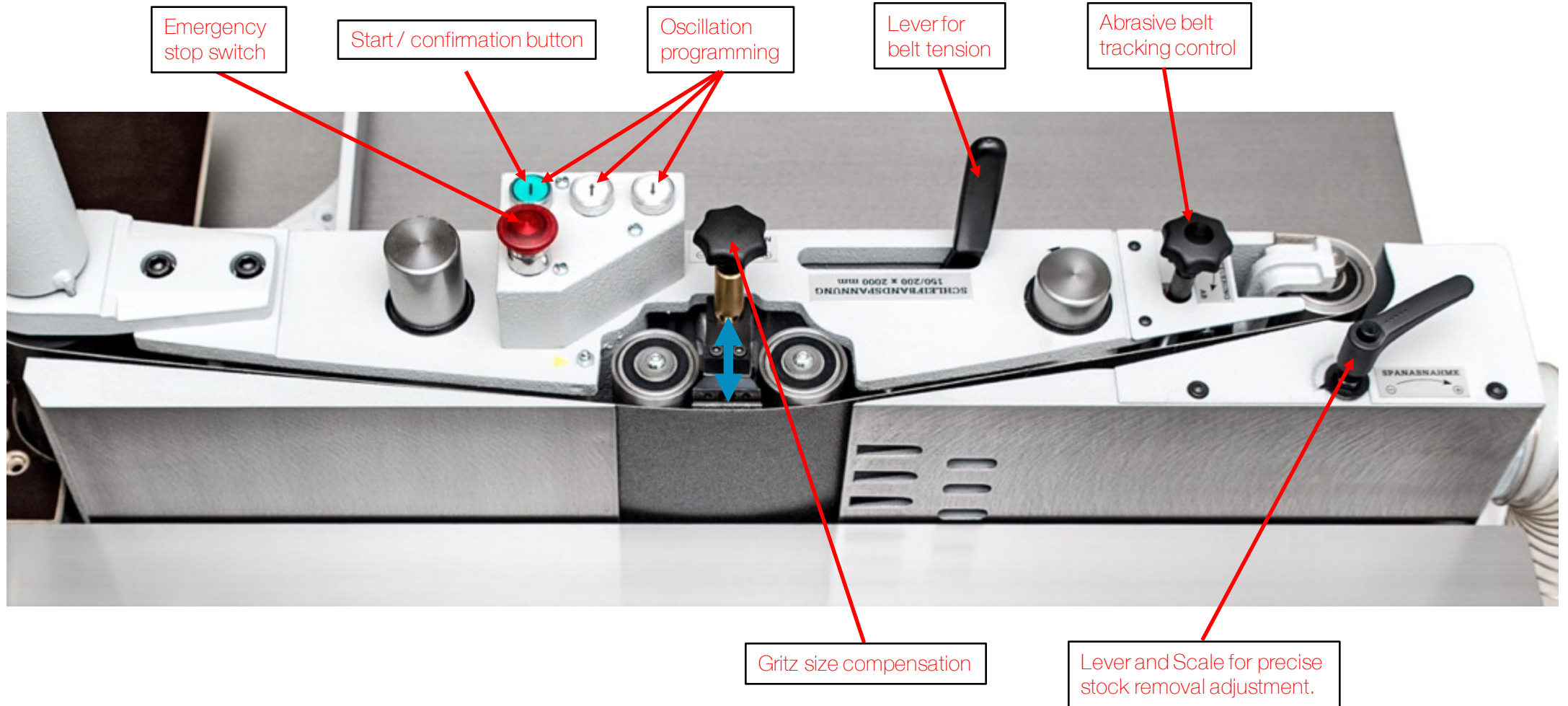
## Uniq: „GENERAL SPECIFICATIONS“

- ✓ Two extremely solid cast iron tables are provided on both sides of the sander.
- ✓ The **entire** sanding unit is pivoting (patented).
- ✓ The **entire** sanding unit is oscillating (patented).
- ✓ The sanding belt runs along two pulleys in order to reduce strain/wear on the graphite cloth
- ✓ Most easily adjustable centring device for sanding belt run
- ✓ Damper system for constant belt tension compensates belt length tolerances
- ✓ Abrasive belt dimension: **200 mm x 2000 mm (8“ x 79“)**.
- ✓ Abrasive belt speed: **15 m/s (45 ft/s)**.
- ✓ Main motor: **3,0 kW, 380 V / 50 Hz EUROPE** (4 HP, 208 - 230 V / 60 Hz USA ). A neutral current connection is mandatory.



## Uniq: „CONTROL DEVICES“

- ✓ The controls of the *Uniq* are intuitive and very precise.



## MAIN SANDING UNIT: „PIVOTING OF THE UNIT“

- ✓ The main sanding unit is a **patented construction** by KÜNDIG.
- ✓ No height adjustment of the working tables is required when pivoting the patented sanding unit.
- ✓ The angle of inclination of the sanding unit is adjustable by motor, ranging from **90° to 45°**. It is displayed on a corresponding scale.

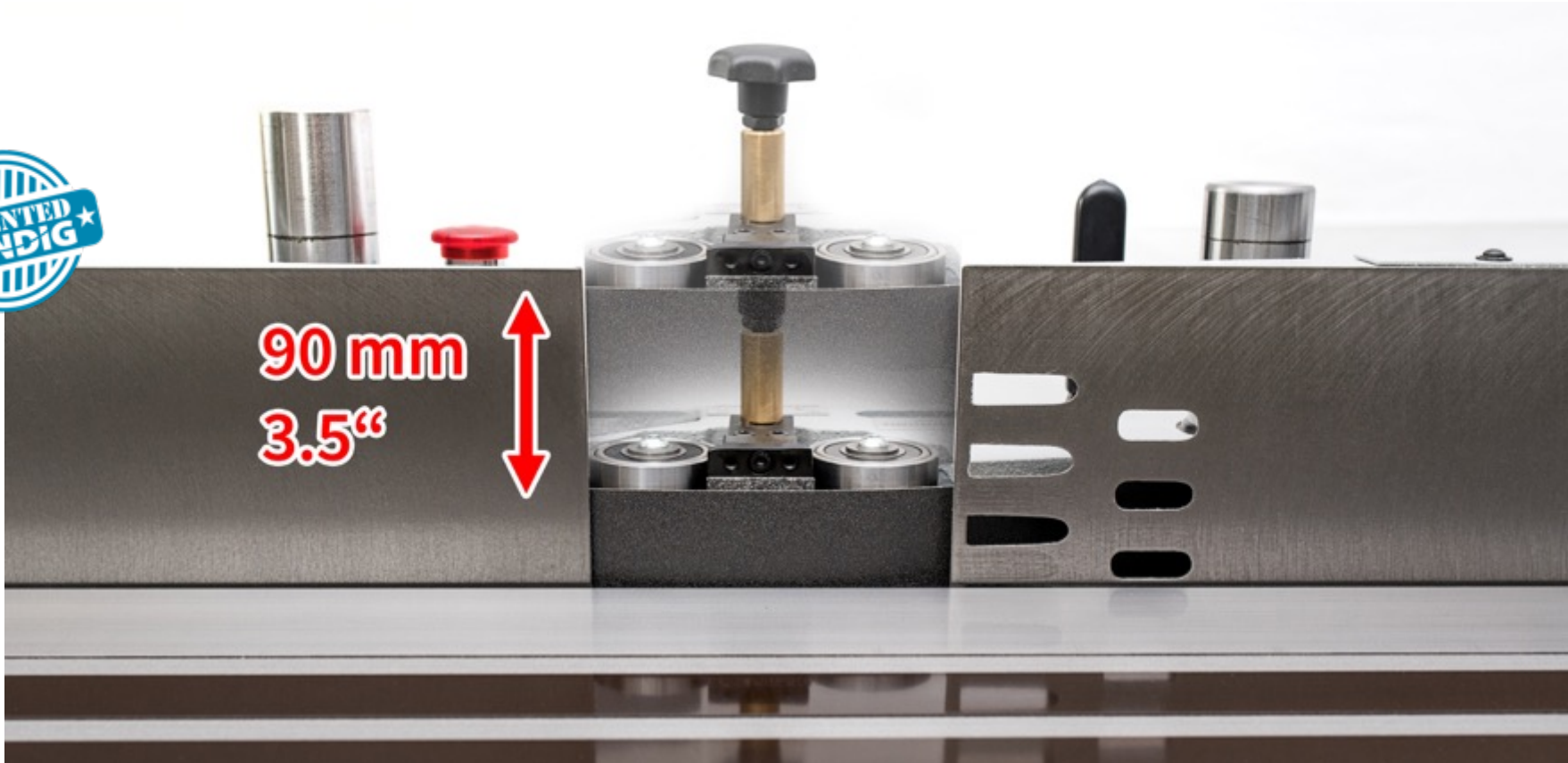


## MAIN SANDING UNIT: „OSCILLATION“

- ✓ The **entire** sanding unit is oscillating.
- ✓ Individually programmable oscillation stroke from **0 – 90 mm (0 – 3,5“)**.
- ✓ Full utilisation of abrasive belt and graphite cloth through programmable oscillation of the entire sanding unit.
- ✓ The oscillation is also fully active even when the main sanding unit is in a tilted position.
- ✓ The belt oscillation is driven by a separate motor.



90 mm  
3.5"





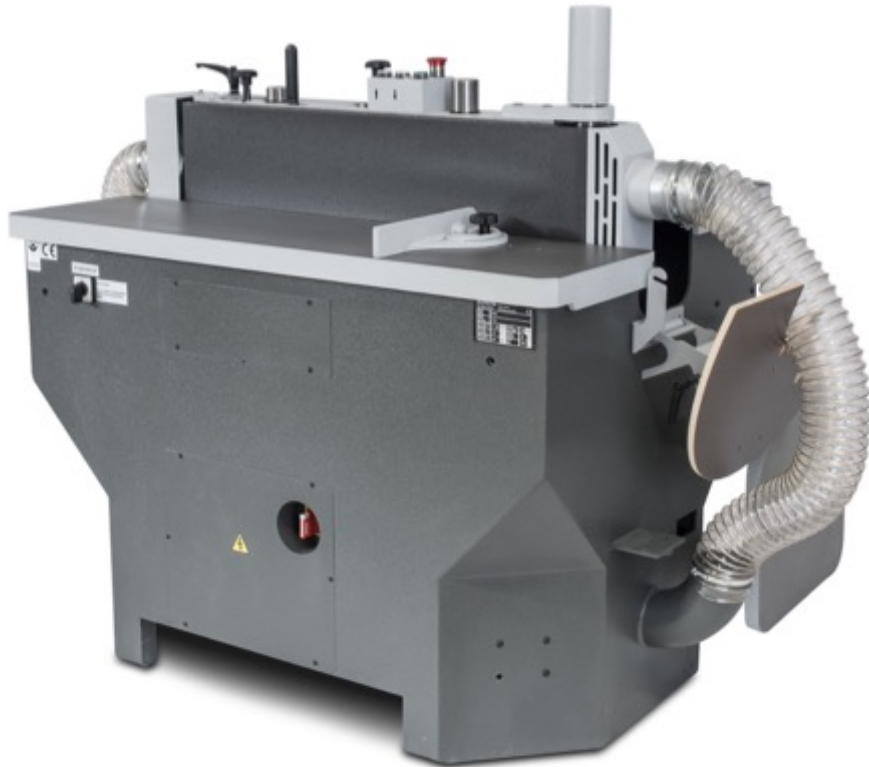
## 1st. SANDING STATION: „VENEER-STATION“

- ✓ This station is used for controlled and precise stock removal and works exactly like a jointer.
- ✓ Precise adjustment of the in-feed fence for precise and controlled stock removal. **(Scale 1/10 mm / 0,004“).**
- ✓ The in-feed fence is designed with ,built-in‘ suction slots.
- ✓ Sanding platen/pad can be adjusted in order to compensate for abrasive grit.
- ✓ Zero-levelling feature of the *in-feed fence* & *sanding platen/pad* & *out-feed fence*.
- ✓ The **entire** sanding unit with the abrasive belt oscillates and the sanding belt runs over a graphite cloth with cooling properties.
- ✓ Working height: **915 mm ( 36“).**
- ✓ Table dimension: **320 mm x 1200 mm (12,6“ x 47,2“).**



## 2nd. SANDING STATION: „WOOD-STATION“

- ✓ This station is used to sand flat, angled or chamfered edges as well as outer curves
- ✓ The **entire** sanding unit with the abrasive belt oscillates and the sanding belt runs over a graphite cloth with cooling properties.
- ✓ The "WOOD - STATION" - table is equipped with a bevelling fence with scale.
- ✓ Working height: **840 mm ( 33“)**.
- ✓ Table dimension: **320 mm x 1200 mm (12,6“ x 47,2“)**.

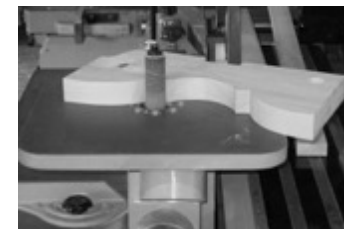


### ❗ 3rd. SANDING STATION: „DRIVE-ROLLER-STATION“

- ✓ The "DRIVE ROLLER - STATION" is an **optionally available** sanding station.
- ✓ This station is designed to sand different diameters of inner curves and roundings.
- ✓ For this feature, the machine must be equipped with the quickly mountable auxiliary „**cast iron table H**“.
- ✓ The auxiliary „**cast iron table H**“ is equipped with holes for dust extraction. Extraction outlet **Ø 150 mm (6")**.
- ✓ The oscillating mandrel can be configured with sanding bobbins of different diameters:  
**Ø 25 mm (1,0"), Ø 30 mm (1,2"), Ø 40 mm (1,6"), Ø 45 mm (1,8") x 100 mm (4")**.
- ✓ As it is an extension of the main sanding unit the large oscillation stroke of up to **90 mm (3,5")** does apply to this feature as well.
- ✓ Working height: **1110 mm (43,5")**.
- ✓ Table dimension of the auxiliary „**cast iron table H**“ is 400 x 500 mm (15,8" x 19,7").

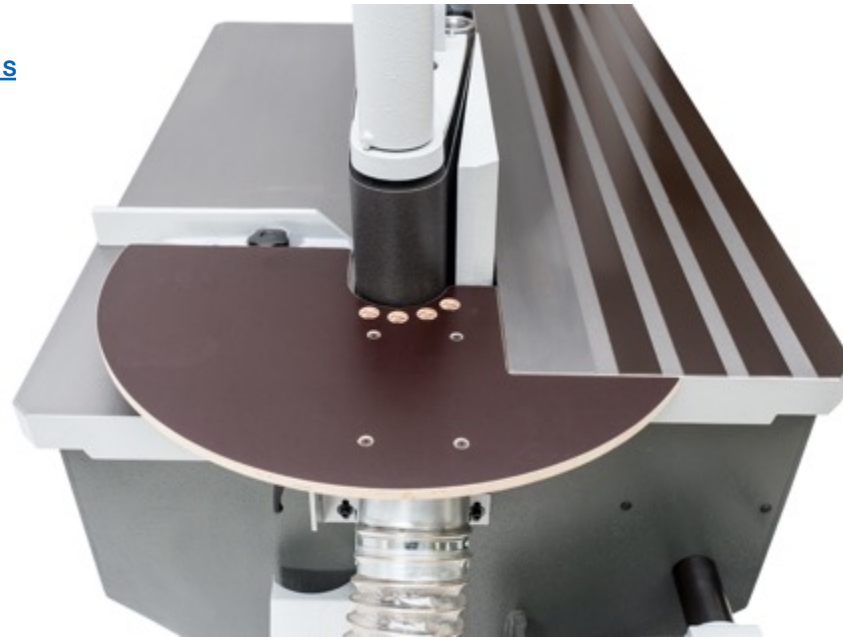


[CAST IRON TABLE H](#)



#### ❗ 4th. SANDING STATION: „FRONTAL-STATION“

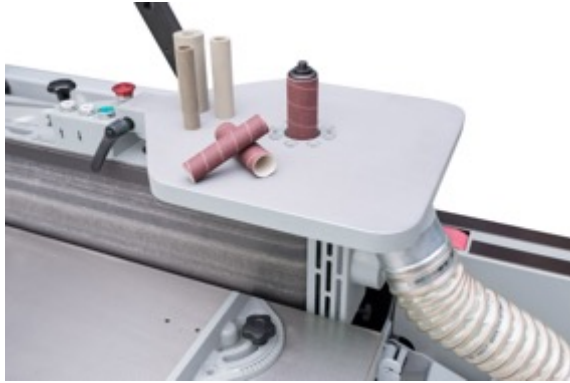
- ✓ The "FRONTAL - STATION" is an **optionally available** sanding station.
- ✓ This station is designed to sand bigger inner roundings of work-pieces against the rubberized belt driving roller of the main sanding unit.
- ✓ For this feature the machine must be equipped with the quickly mountable **„half round table S“**.
- ✓ The **„half round table S“** is designed with small holes for dust extraction. It can be folded away when not used. Extraction outlet  $\varnothing$  **150 mm (6")**.
- ✓ The diameter of the abrasive belt drive roller is **90 mm (3,5")**.
- ✓ As this is part of the main sanding unit, the large oscillation stroke of up to **90 mm (3,5")** does apply to this feature as well.
- ✓ Working height: **915 mm ( 36")**.
- ✓ Table dimension: the set radius of the **„half round table S“** is **300 mm (11,75")**.





## ! ADDITIONAL MACHINE OPTIONS

 [CAST IRON TABLE H](#)

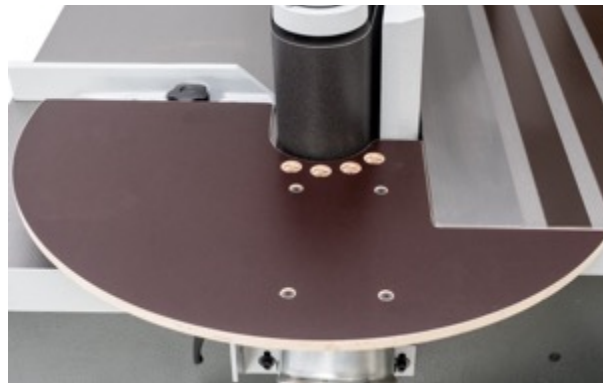


### ! Optional: „cast iron table H“

Necessary for „DRIVE ROLLER-STATION“.

**400 x 500 mm** (15,8" x 19,7").

 [HALF ROUND TABLE S](#)



### ! Optional: „half round table S“

Necessary for „FRONTAL-STATION“.

**400 x 500 mm** (15,8" x 19,7").

 [GROOVES IN-FEED PLATEN](#)

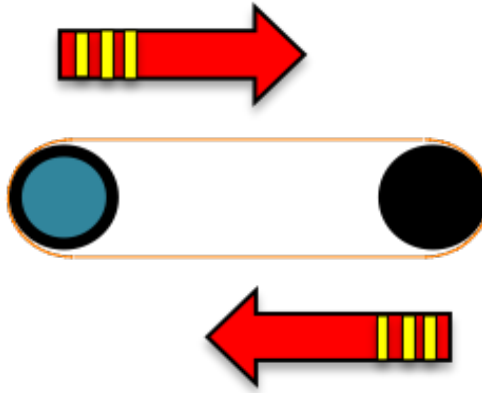


### ! Optional: „grooved in-feed fence“

For „VENEER-STATION“.

Grooves in the inlet fence for sanding work-pieces with an excess length of veneer.

## ! ADDITIONAL MACHINE OPTIONS



### ! Optional: „stepless belt speed“

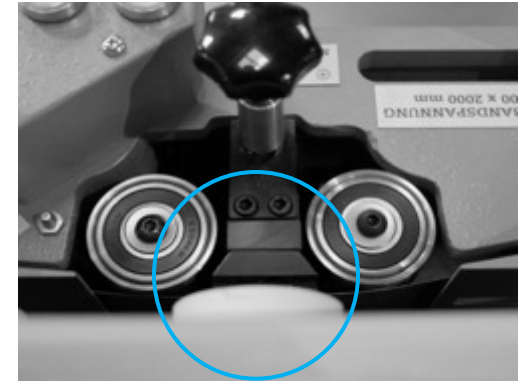
Stepless abrasive belt speed for extremely sensitive surfaces or material with a low melting point.

**3 – 15 m/s** (9 – 45 ft/s).



### ! Optional: „HARD sanding pad“

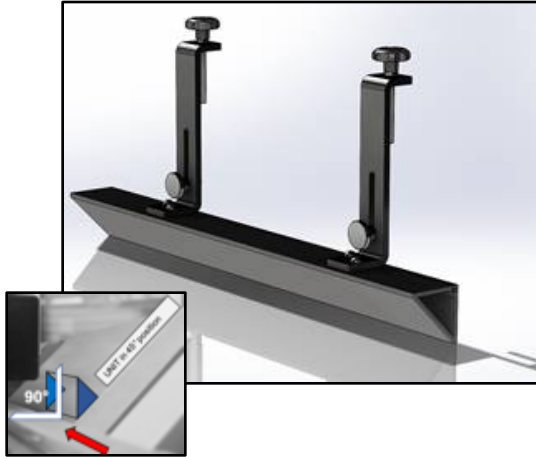
Sanding Pad insert „hard“ for sanding solid wooden and veneered edges.



### ! Optional: „CERAMIC sanding pad“

Special CERAMIC sanding pad insert for heavy calibration tasks.

## ! ADDITIONAL MACHINE OPTIONS



### ! Optional: „auxiliary fence 45°“

Mountable at the in-feed fence, the „auxiliary in-feed stop 45°“ is for sanding phases of the edges of the work-piece with the main sanding unit in 45° position.



### SUPPORT PRESSURE ROLLERS

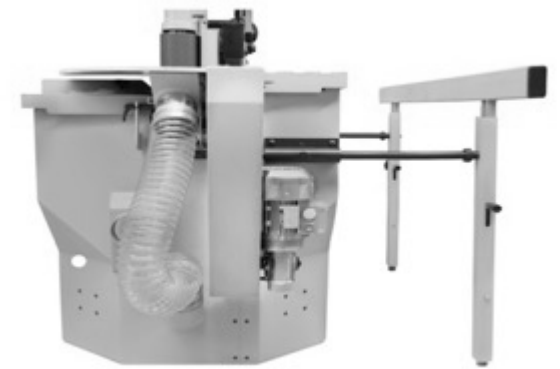


### ! Optional: „support pressure rollers“

A special device, which simplifies the sanding of glazing bars, rails or similar work-pieces. Main unit in 90° position.



### TABLE ENLARGEMENT



### ! Optional: „table enlargement“

Table enlargement with a steplessly to **900 mm** (35,33") extendable solid front bar. With easy running guides and double support to the floor with unevenness compensation.

## ! ADDITIONAL MACHINE OPTIONS

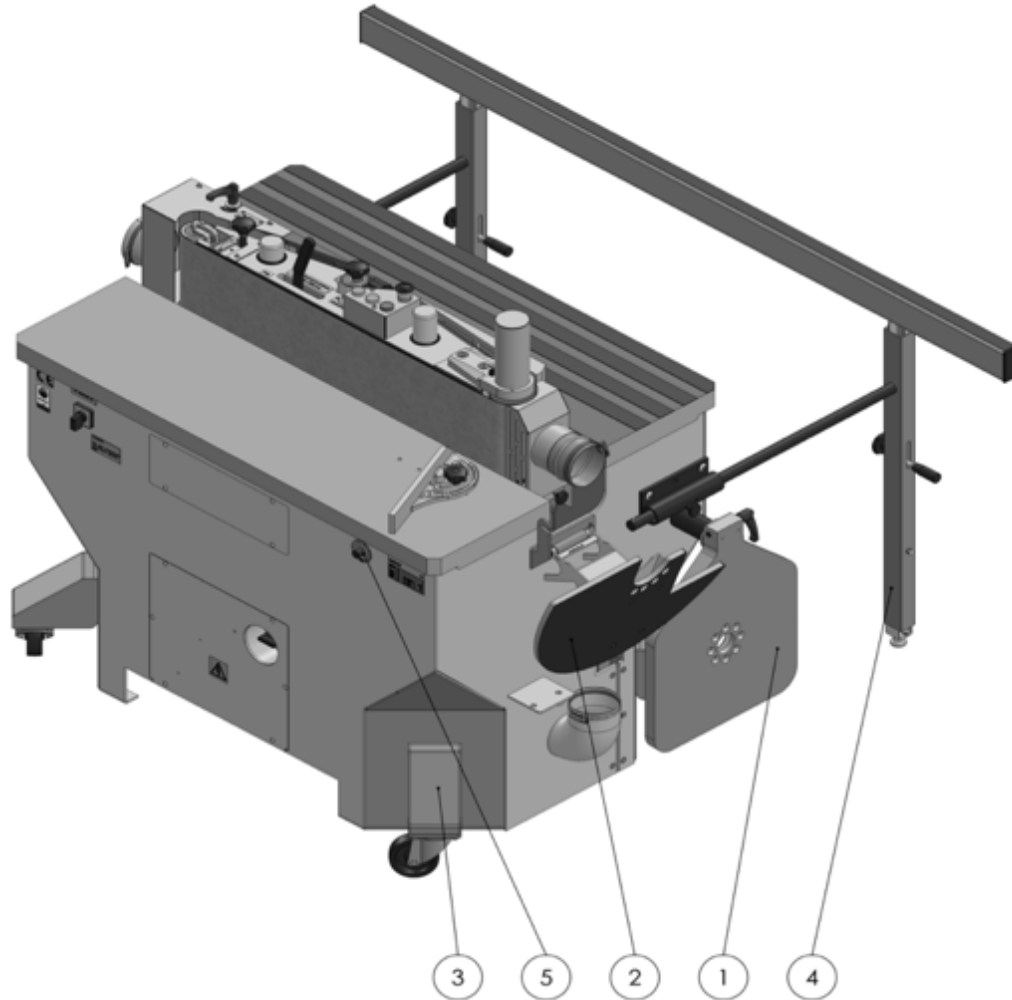


### ! Optional: „machine mobile“

Reinforced frame execution, with metal covers.  
4 castors including locking device.



## ! ADDITIONAL MACHINE OPTIONS



### *Additional MACHINE OPTIONS „OVERVIEW“:*

1. „cast iron table „H““
2. „half round table "S"“
3. „machine mobile“
4. „table enlargement“
5. „stepless variable abrasive belt speed“
6. „grooved inlet fence“
7. „HARD sanding pad“
8. „CERAMIC sanding pad“
9. „auxiliary in-feed stop 45°“
10. „support pressure rollers“

## TECHNICAL DATA

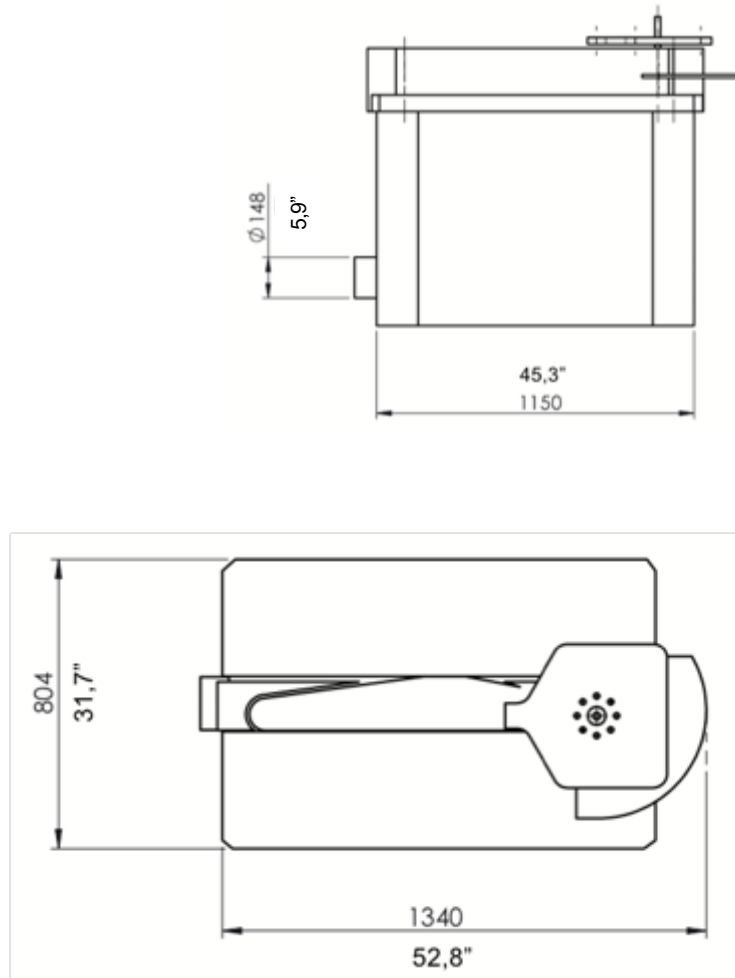
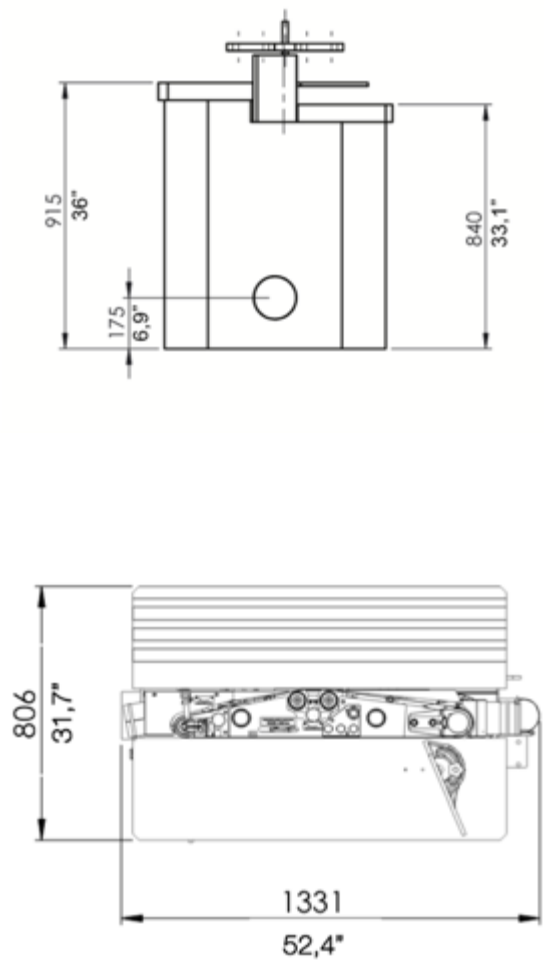
### Technical data:

### USA

### EUROPE

Voltage	208-230 V / 60Hz / 15 A	380 V / 50 Hz / 10 A
Sanding belt width	8"	200 mm
Sanding belt length	79"	2000 mm
Sanding belt speed rate	45 ft/s	15 m/s
Speed of drive roller	3'600 rpm	3.600 rpm
Drive motor	5 HP	3 kW
Oscillation motor	0,25 HP	0,18 kW
Pivot motor	0,08 HP	0,06 kW
Net weight	1058 lb	480 kg
Extraction	1x 6" port @ 750 CFM	1x 150 mm @ 1.300 m3/h
Air speed	60 ft/s	20 m/s
Vacuum pressure of extraction	1'800 Pa	1.800 Pa

### FOOTPRINT



## Reference-Customers

ELKAY®



MILLWORK 360


**Ironospann**  
Wood, perfected


F/LIST


**Häcker**  
kitchen.germanMade.

SIEMENS


**Bösendorfer**  
DER KLANG, DER BERÜHRT

**MERINO** LAMINATES  
THE POWER TO CREATE




# KUNDIG

*Edge sanding at its absolute best*



*Sanding Ideas – Ideas that get the Job done!*